

# PROFESSIONAL BUILDING

108 W Main Street  
Sun Prairie, WI

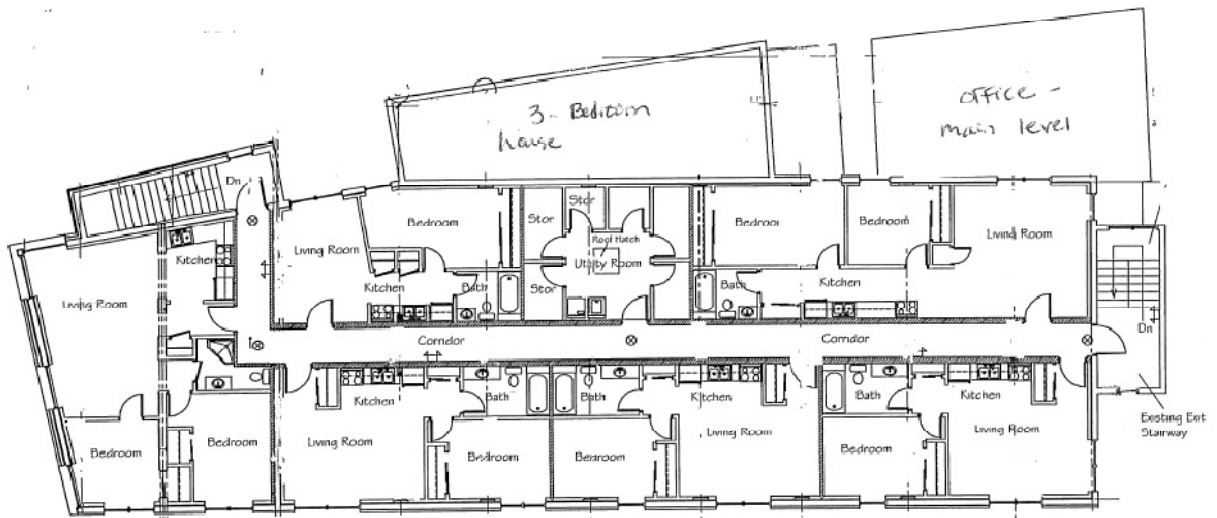
## Overview Layout:

The apartments will have ceiling height varying from 14-11' and a very modern feel with an old world charm. Everything in the apartments is new...windows, doors, walls, floors, fixtures, etc...

Each unit will have its electrical separately metered. There is a washer and dryer located onsite. Every unit will also have its own assigned storage closet off the washer/dryer area.

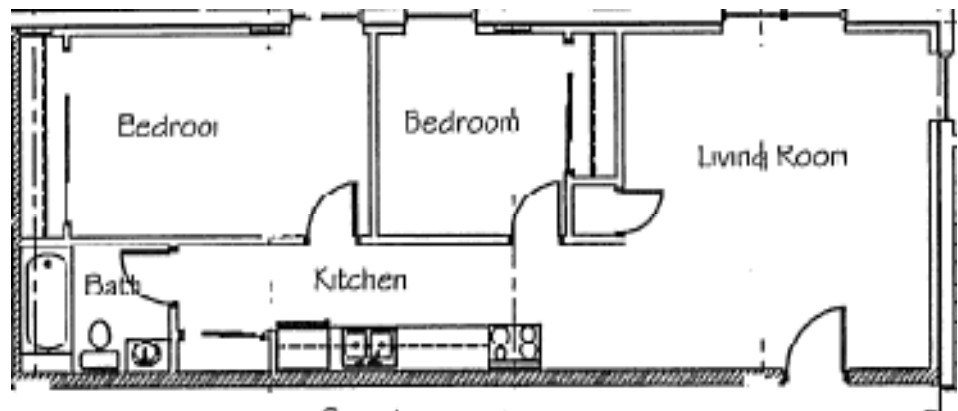
All apartments will have 1 reserved parking space in the parking lot behind the building. Additional parking is available in the parking lot for the building as well as the neighboring public parking lot.

Main Street



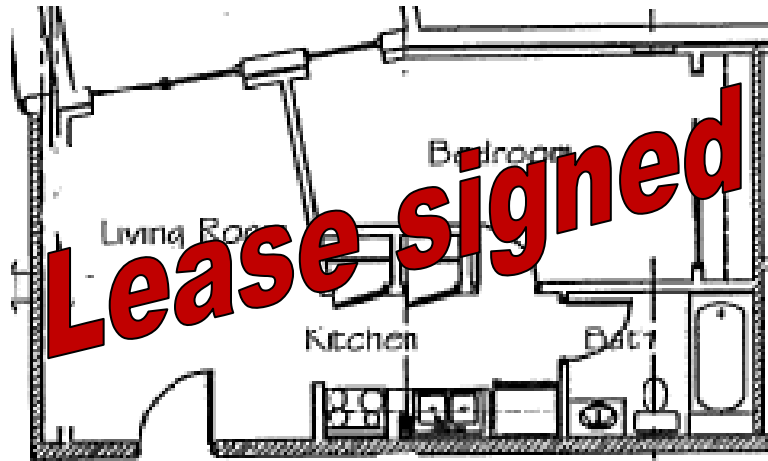
## Unit 1:

2 bedroom, 1 bath  
Near back entrance  
Close to parking  
Rent: \$745/mo



**Unit 2:**

1 bedroom, 1 bath  
Near washer & dryer  
Close to front entrance  
Rent: \$575/mo



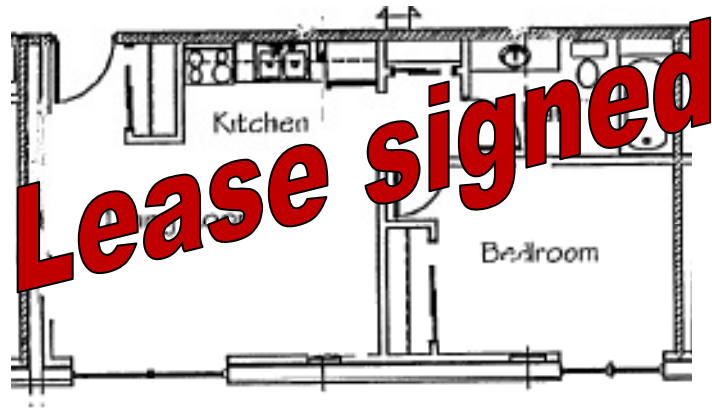
**Unit 3:**

Spacious 2 bedroom, 1 bath,  
front of building overlooking Main St  
The largest unit in the building.  
Rent: \$775/mo



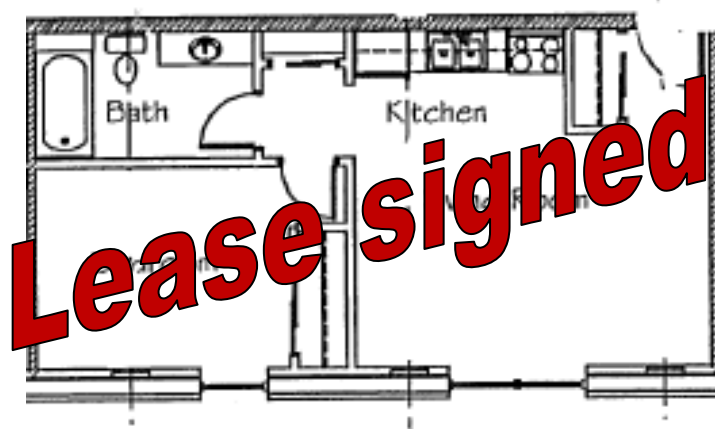
**Unit 4:**

1 bedroom, 1 bath  
Open living room/kitchen areas  
Near front entrance/mailboxes  
Rent: \$575/mo



**Unit 5:**

1 bedroom, 1 bath  
Open living/kitchen areas  
Near washer & dryer  
Close to front & back entrances  
Rent: \$595/mo



**Unit 6:**

1 bedroom, 1 bath  
Near back entrance  
Close to parking  
Rent: \$595/mo

